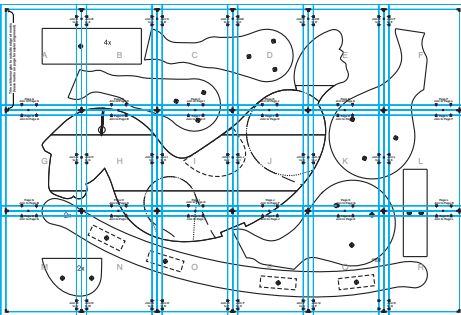
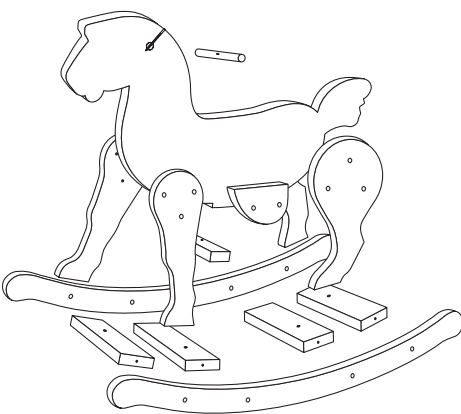


# The Rocking Horse

**YOUR SHOPPING LIST:** Lumber: 1" x 24" x 48" pine plywood and 30 #10 screws.



A real playmate for children has to stand the test of time and endurance. Therefore, we recommend the body parts of the rocking horse be made of 1" thick solid pine (end joined boards available in 1" x 24" x 48") and assembled by an adult. First print the individual template pages. Lay out the pages as shown by the guide marks and tape them together to create the final plan template. Affix the template to your sheet of lumber. You can either trace the pattern onto the lumber with carbon paper or cut out the various pattern pieces before affixing to the lumber, then trace around them directly onto the lumber. **Make sure to mark the location of drill holes for later assembly.**



Using a jigsaw, carefully cut out each piece. Careful cutting will save sanding time later and provide better end results.



Here is where the precision work begins. Using a router, round off all edges with at least a 1/4" roundover bit so that there are no sharp corners or splinters. We recommend securing the material to the work surface with clamps or using a router mat on the work surface to help keep the material secure. Sand all surfaces with either a random orbit sander or the new Skil Octo finishing sander.



Countersink holes for the #10 woodscrews as shown on the template using a drill/driver. The screws should be countersunk to eliminate any sharp edges.



Now you can begin assembly. Fit all body parts together, then secure with screws. The shaded lines on the template will make positioning easier. Then insert the handle and glue securely in place using wood glue. Let dry.



Now fit the cross support beams to the runners. Ensure that all cross support beams are at least 1/2" in above the ground. Mount the body flush to these pieces and screw together



Check the finished project to ensure there are no rough edges, and sand where needed to insure a smooth, safe surface. Your rocking horse is ready to use as is, or apply a desired finish.

**Note:** Be sure to follow tool safety guidelines as recommended on [www.skiltools.com](http://www.skiltools.com).

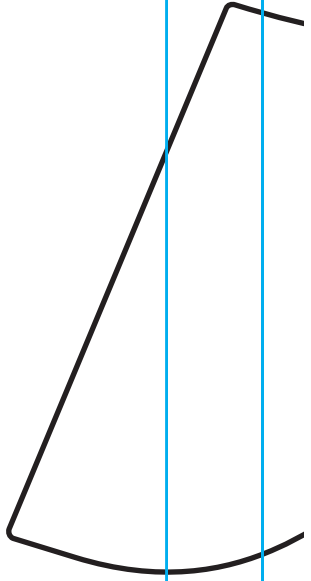
**Safety note:** Only use the rocking horse under adult supervision insuring there is sufficient space, on smooth, level surfaces not near stairs. Regular safety checks and maintenance must be performed on all parts and screws.

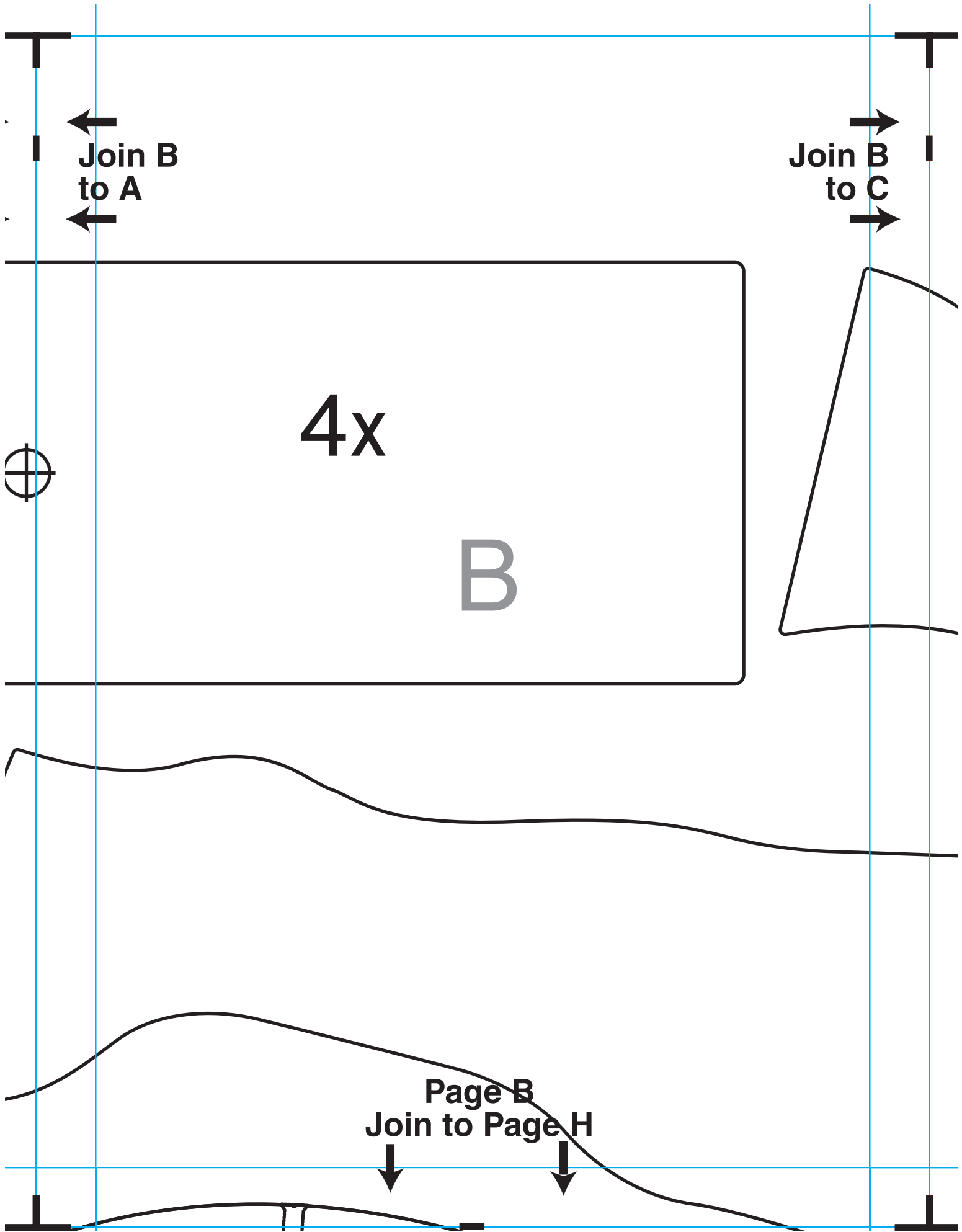
**Trim white margins to outside edge of marks  
(leave marks on page for easier alignment)**

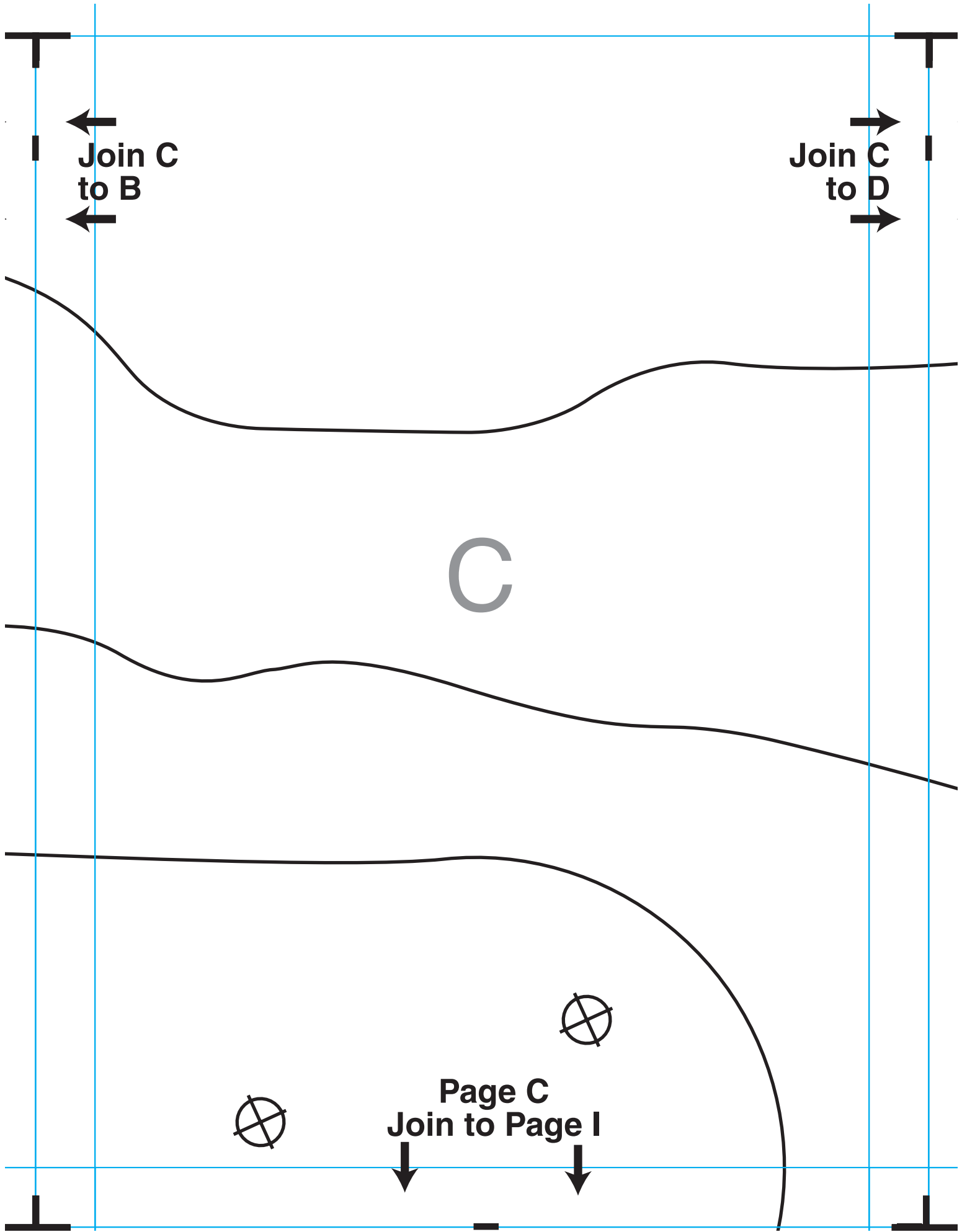
**Page A  
Join to Page G**

**Join A  
to B**

A







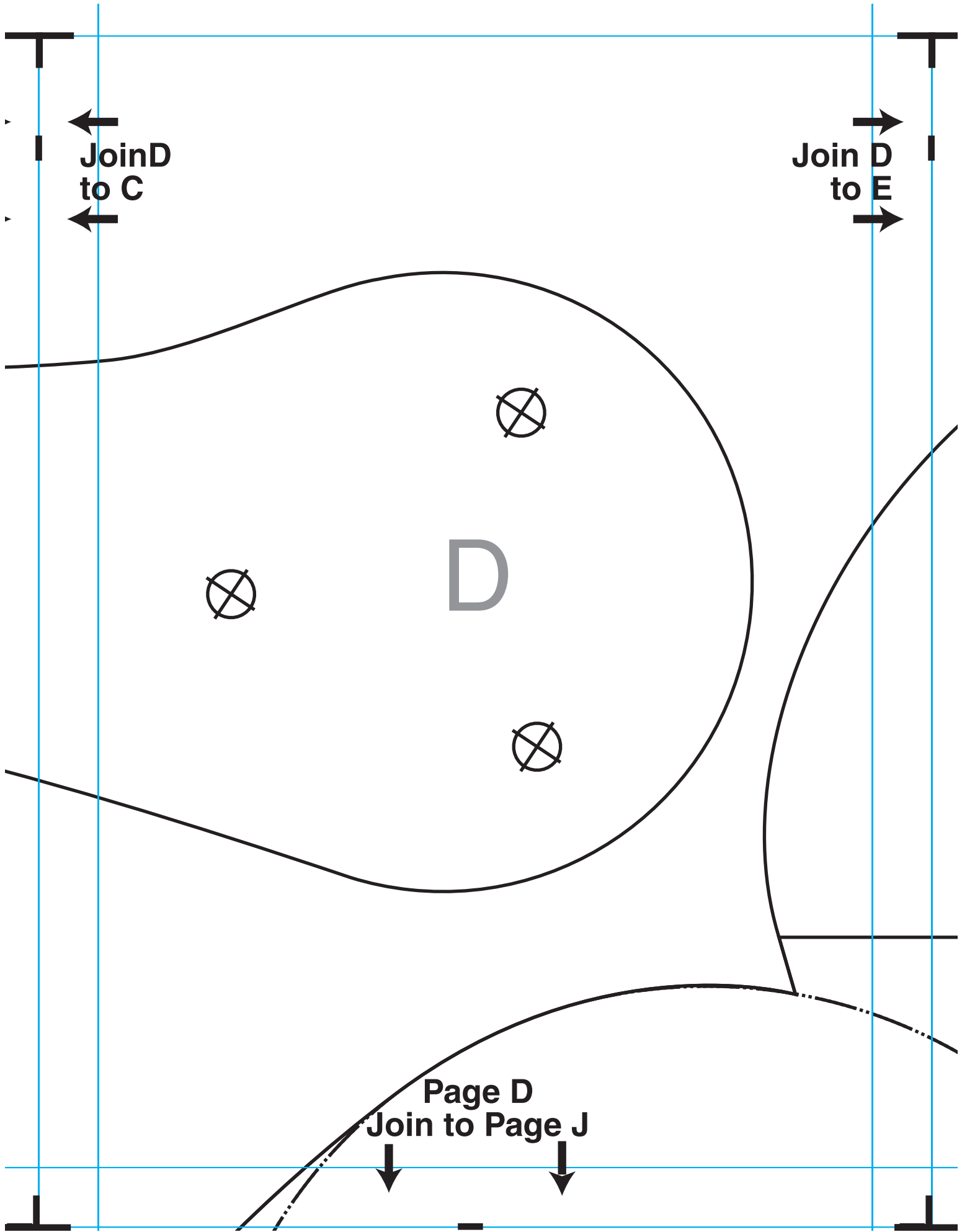
Join C  
to B

Join C  
to D

C

Page C  
Join to Page I



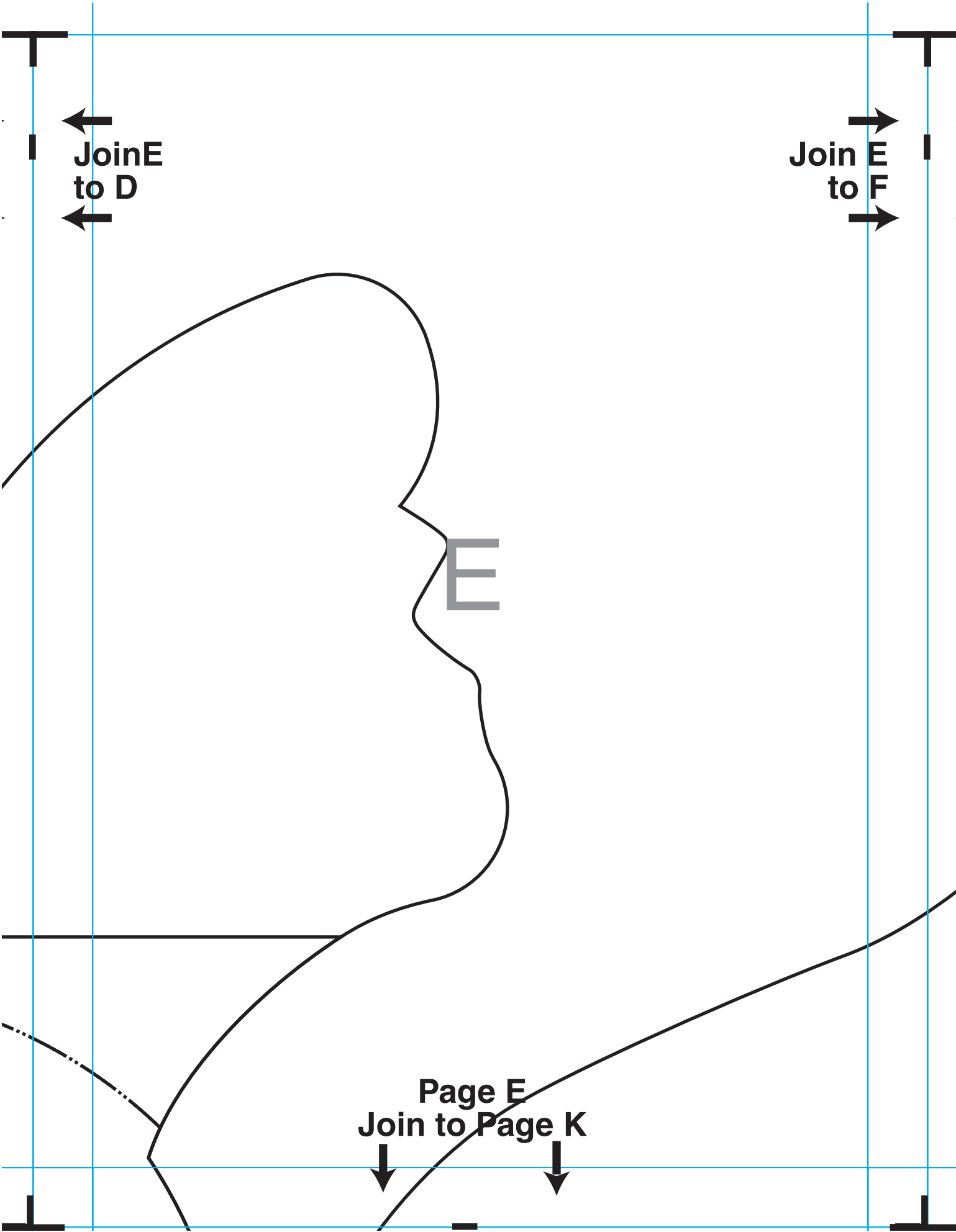


Join D  
to C

Join D  
to E

D

Page D  
Join to Page J

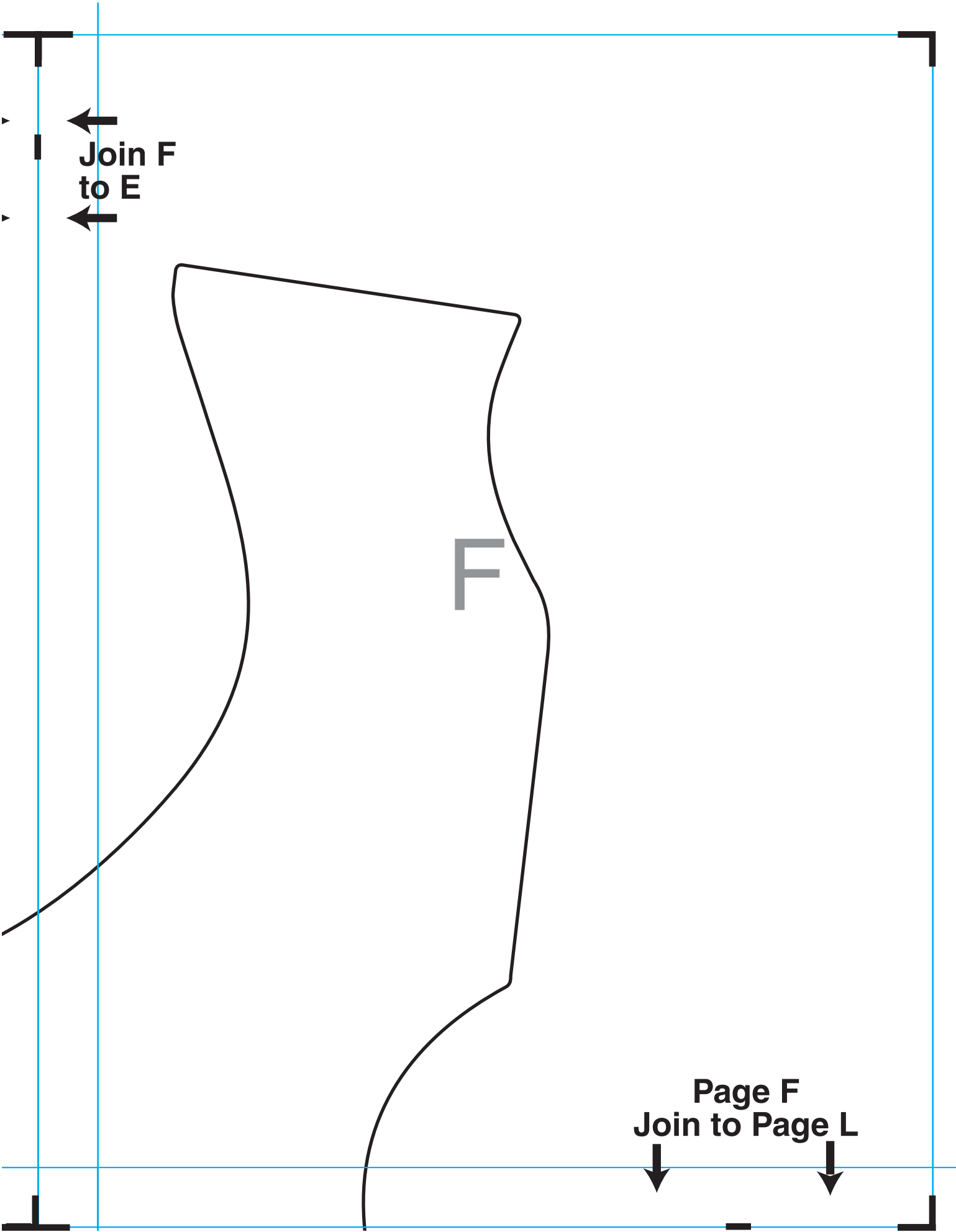


Join E  
to D

Join E  
to F

E

Page E  
Join to Page K

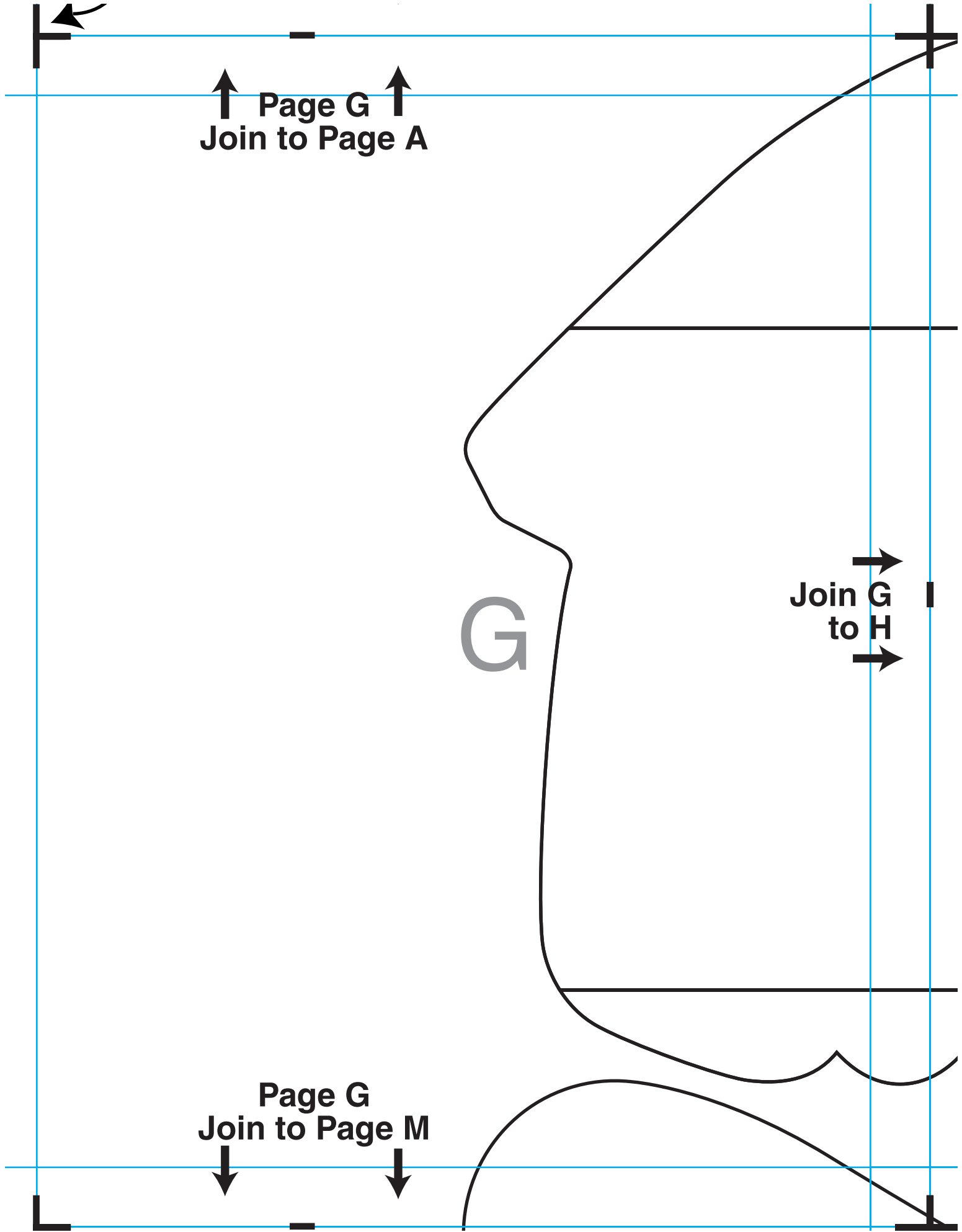


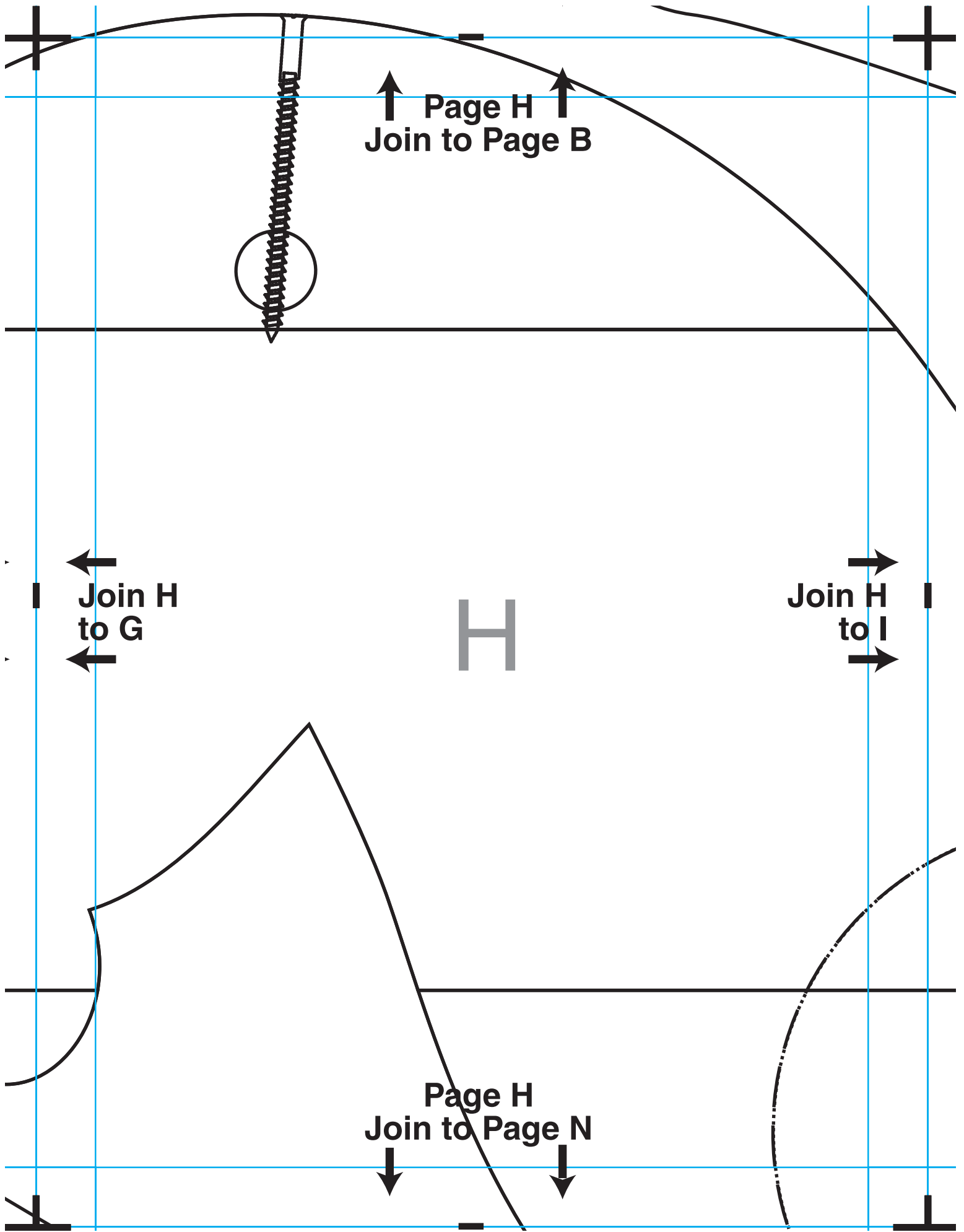
↑ Page G ↑  
Join to Page A

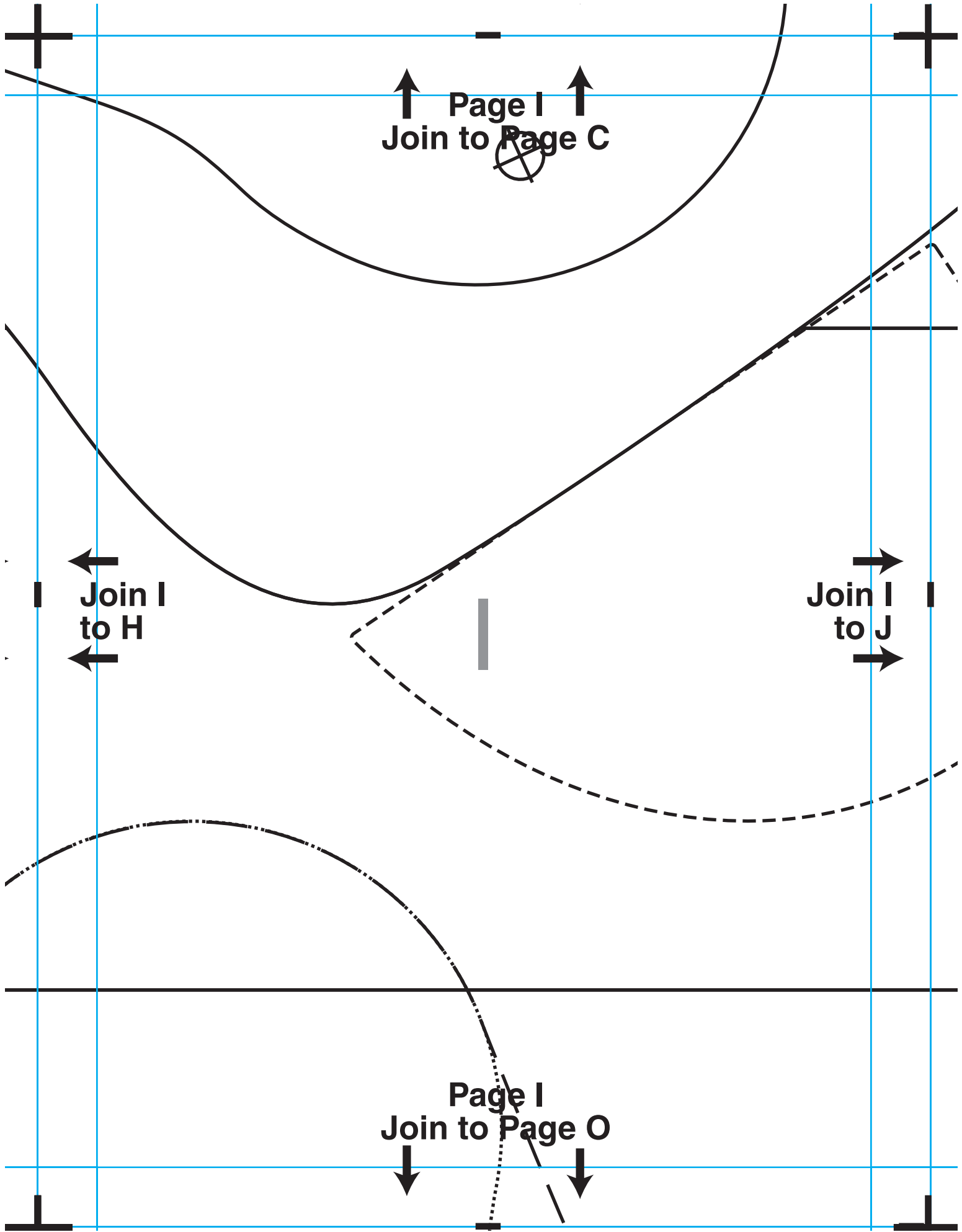
G

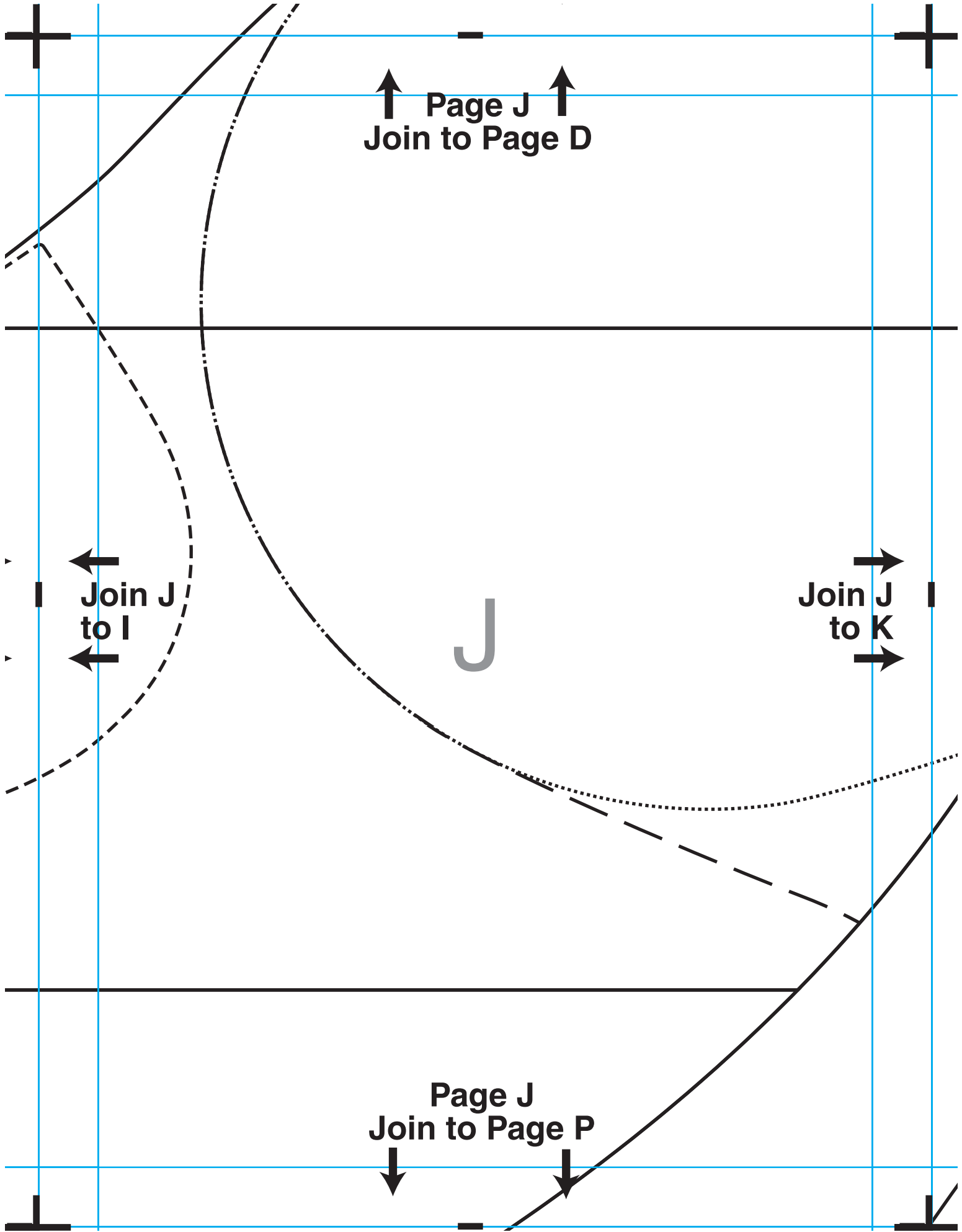
→ Join G  
to H →

Page G  
Join to Page M









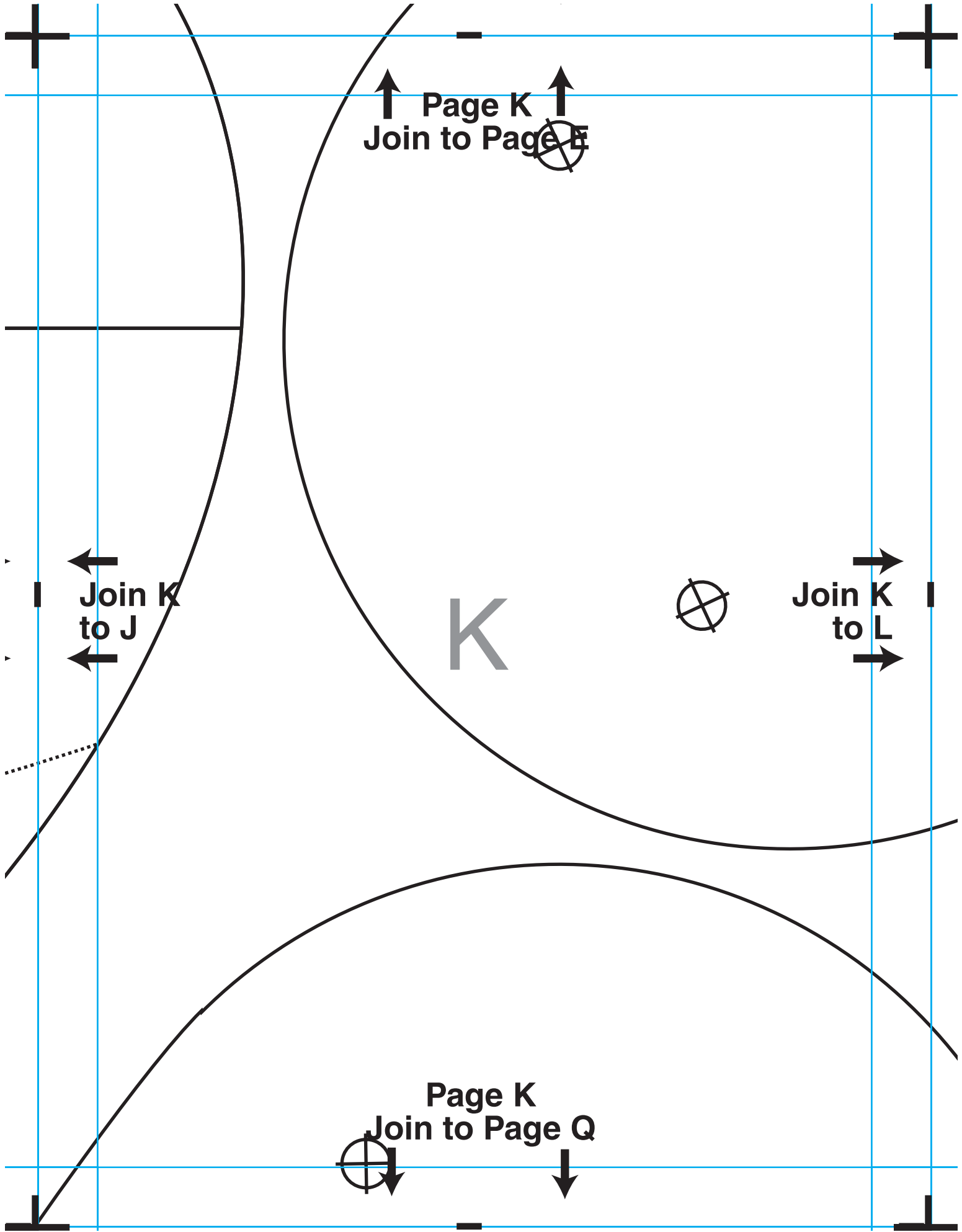
↑ Page J ↑  
Join to Page D

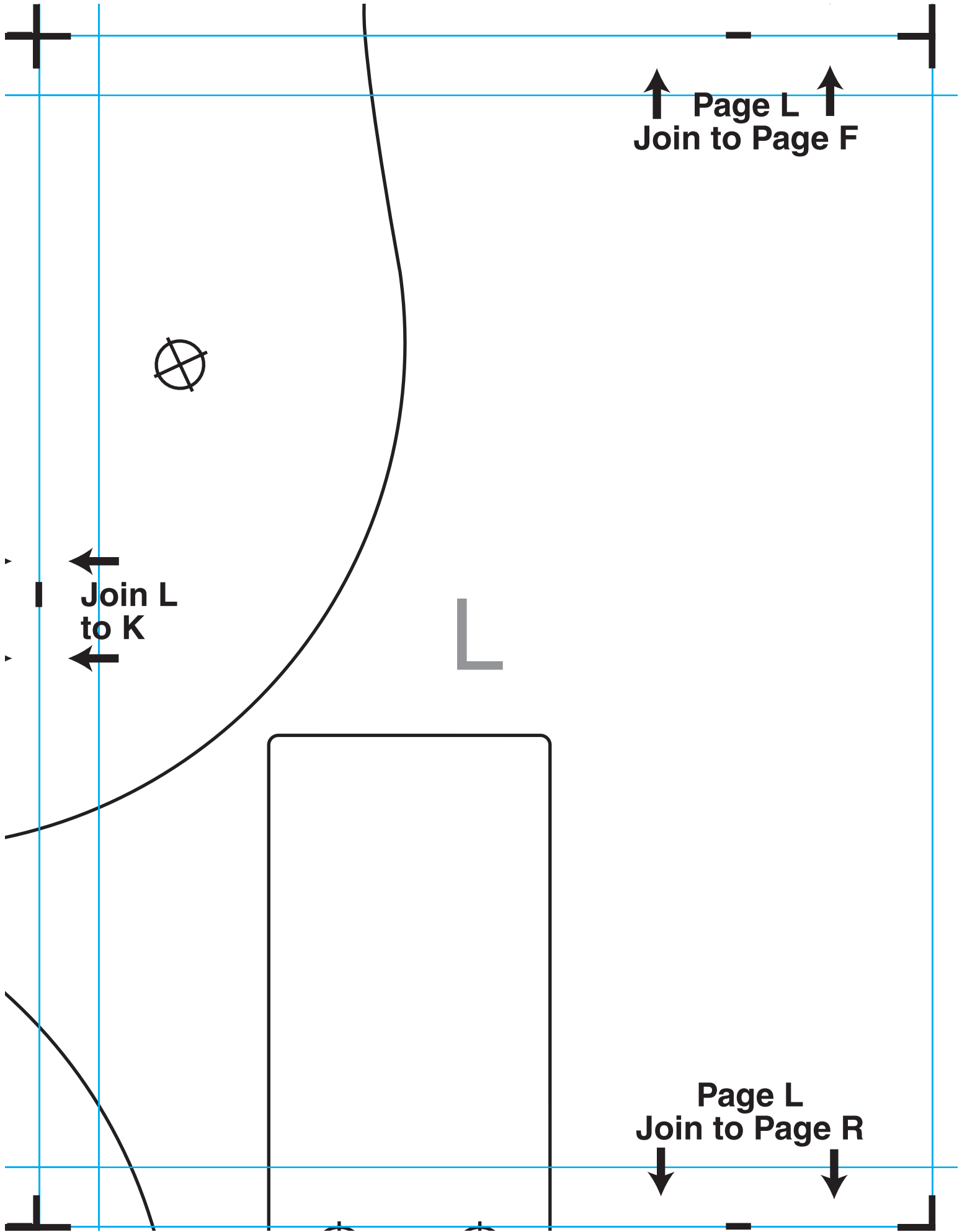
← Join J  
to I  
←

→ Join J  
to K  
→

↓ Page J ↓  
Join to Page P

J





↑ Page M ↑  
Join to Page G

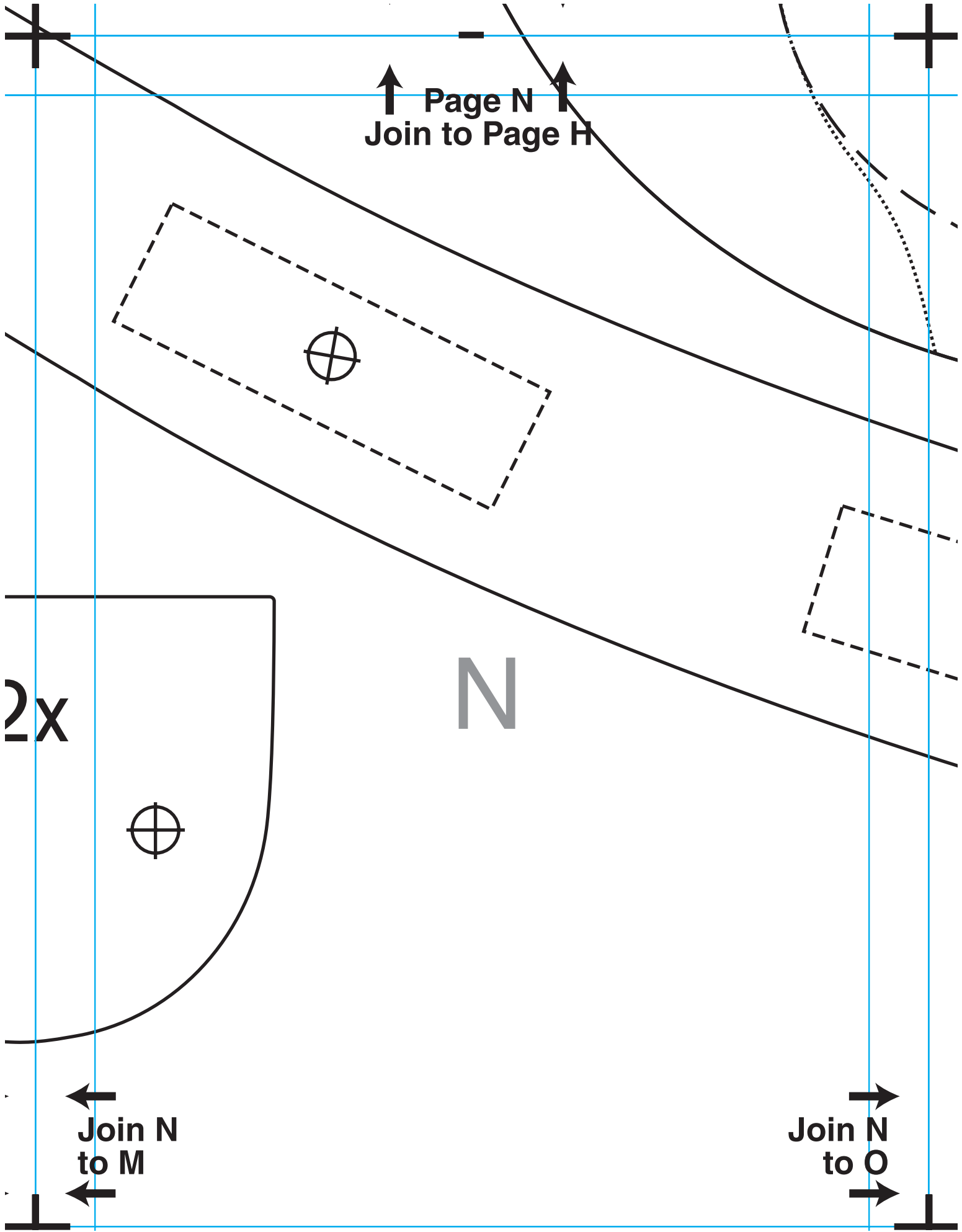
$2x$

M

$2x$



→  
Join M  
to N  
→



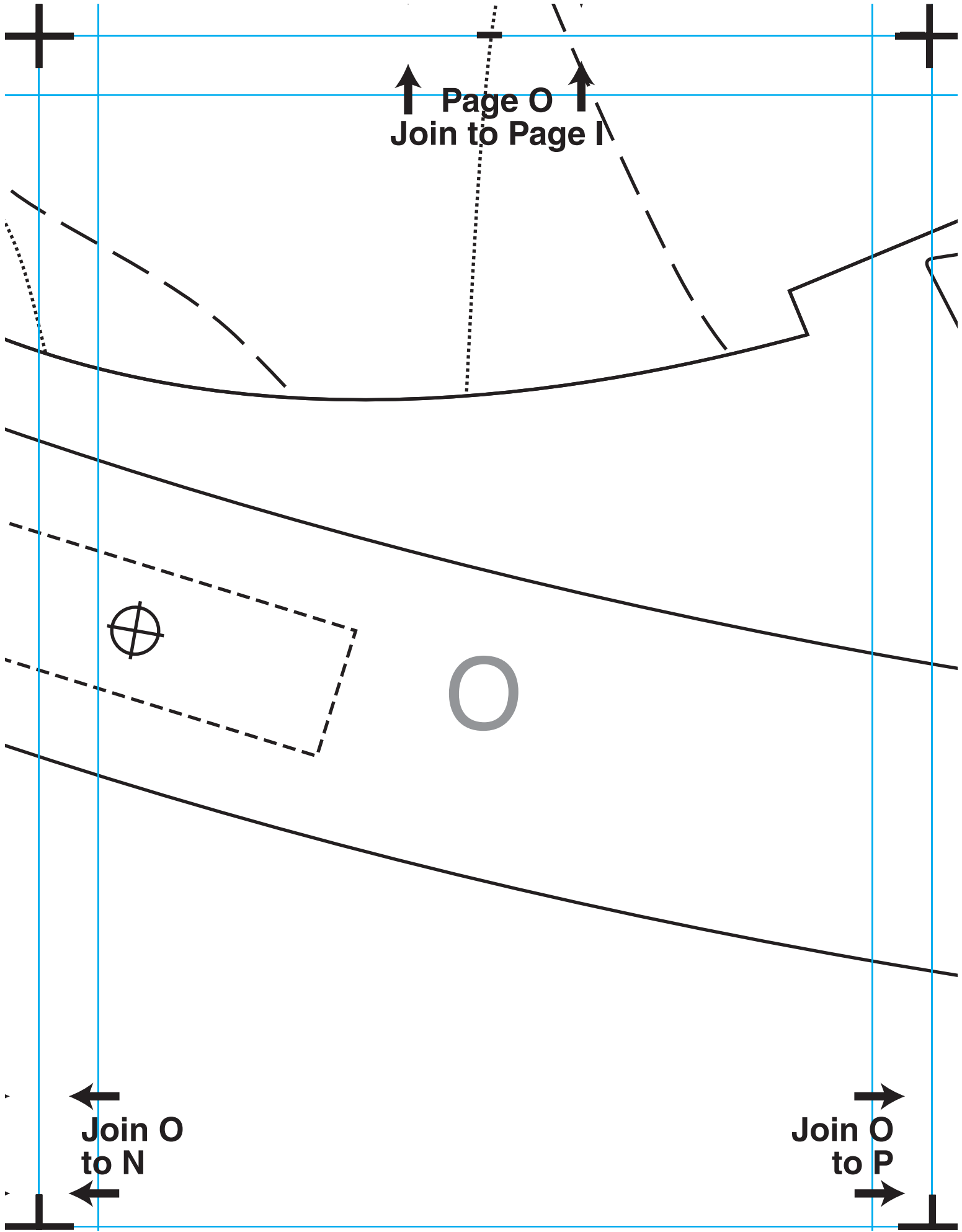
↑ Page N ↑  
Join to Page H

2x

N

← Join N  
to M

→ Join N  
to O



↑ Page 0  
↑  
Join to Page 1

←  
Join 0  
to N  
←

→  
Join 0  
to P  
→

O

